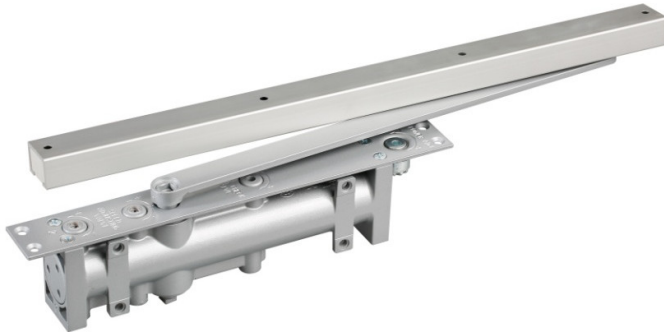


**X-U8924**

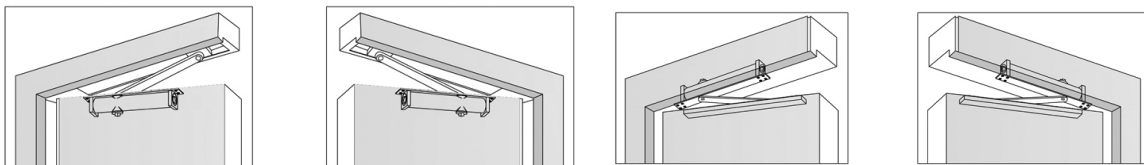
## **OVERHEAD CONCEALED DOOR CLOSERS**



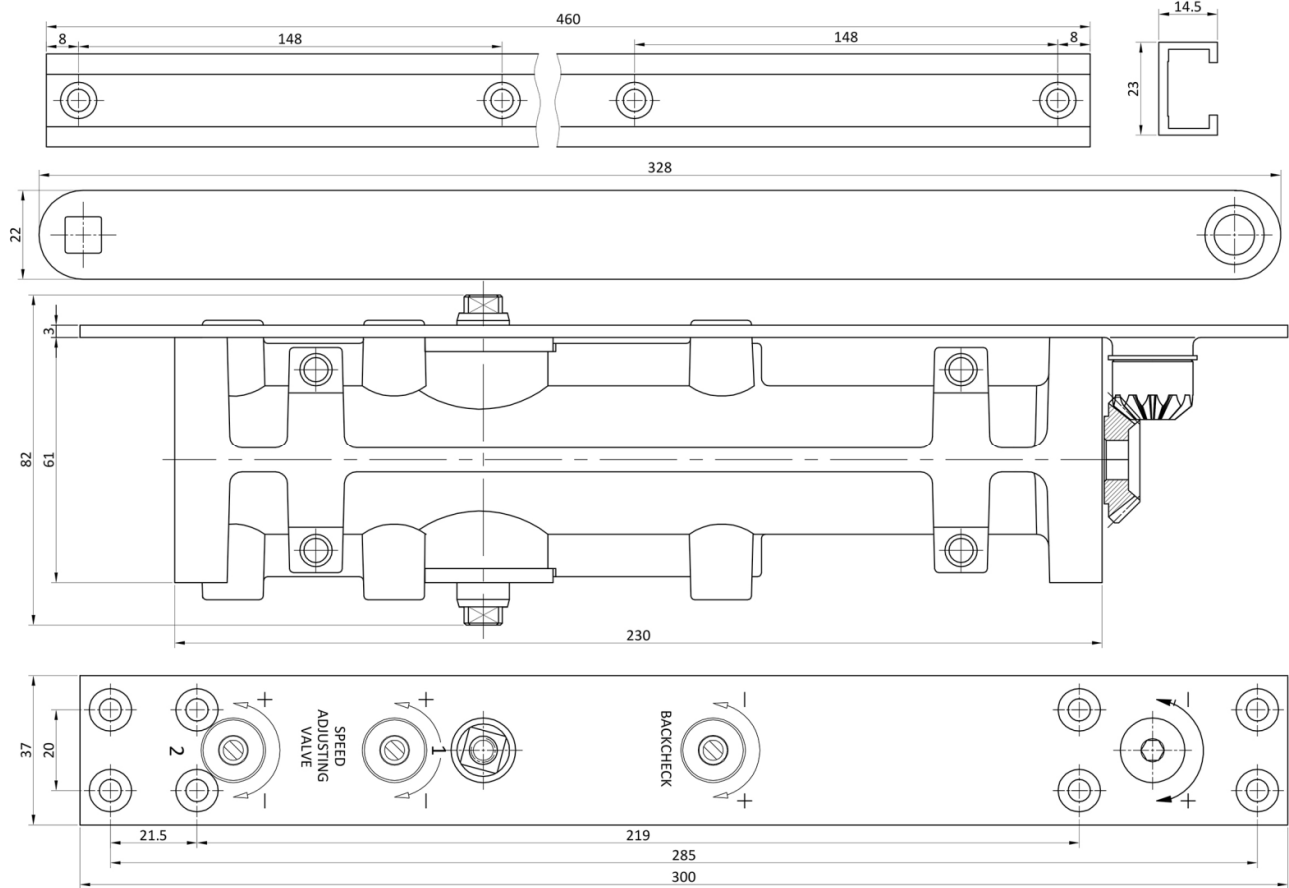
### **STANDARD FEATURES**

- **Certification:** UL & CUL Listed, UL10C 3 Hours fire rating
- **Spring Power:** Size 2 to 4
- **Durability:** 500,000 cycles above
- **Function:** Adjustable Closing speed  
Adjustable Latching speed
- **Installation type:** Concealed mount
  
- **Pressure relief valve:** Yes
- **Max. Opening:** 170 ° for size 2/3, 90° for size 4
- **Mechanism:** **Rack & Pinion**
- **Hand of door:** Non handed
- **Materials of Body:** Die Cast Aluminum
- **Materials of guide rail and Main Arm:** 6061, Steel
- **Materials of Spring :** 60Si2Mn
- **Piston and Pinion:** Heat treated, 20Cr
- **Bearing:** Full complement bearings for long durability
- **Arm shaft width:** 9 mm
- **Fluid:** Germany Brand, Anti-Freeze and Fire -proof for working at -42°C to 55°C
- **Finish:** Aluminum (Silver), Others upon request.
- **Warranty:** 5 Years

### **INSTALLATION TYPE:**



## DIMENSIONAL DRAWINGS



## HOW TO ORDER:

Model	Spring power size	Remarks
X-U8924	2-4	
X-U8924BC	2-4	With Backcheck
<b>Closer Size</b>	Recommended Door width	Recommended Door weight
	<b>Interiors door</b>	<b>Exterior door</b>
2	30"-34"(762-865mm)	
3	34"-38"(865-965mm)	24"-30"(610-762mm)
4	38"-48"(965-1219mm)	30"-36"(762-914mm)
		66-99 Lbs (30-45 Kg)
		99-143 Lbs (45-65 Kg)
		143-187 Lbs(65-85 Kg)